



Type(s)
Project
Date
Notes

GENERAL INFORMATION

Quality luminaires deserve a quality track. OneTrack by ETC is a professional-grade track system that offers two separate circuits that can each be either switched or dimmed, with a built-in data bus for DMX/RDM or DALI lighting control.

When supported on 18 in (0.46 m) centers, OneTrack’s sturdy construction can hold up to 35 lb/ft (52 kg/m). Add to that the many adapters, feeds, end caps, and hanging apparatus options, and OneTrack becomes the perfect solution for nearly any installation.

APPLICATIONS

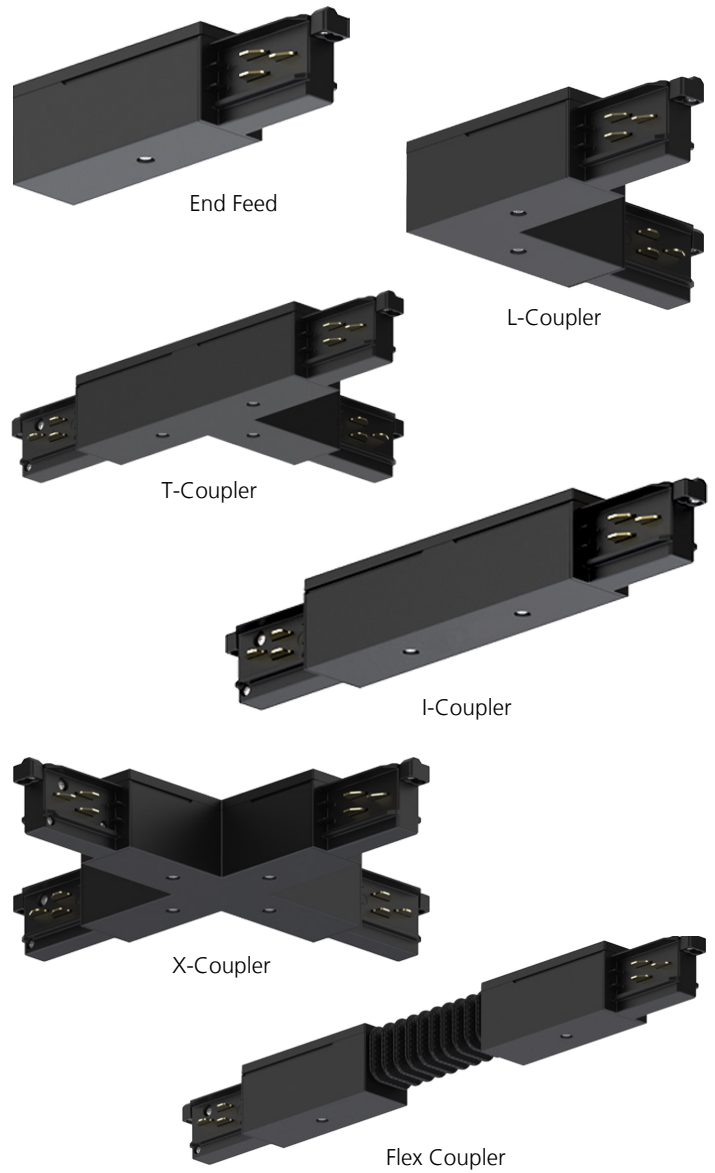
- Museums
- Retail
- Restaurants
- Lobbies
- Ballrooms

FEATURES

- Surface/Suspension-mount profile available in 4 ft, 8 ft, and 12 ft (1.2 m, 2.4 m, and 3.6 m) sections
- Recessed-mount profile available in 4 ft and 8 ft (1.2 m and 2.4 m) sections
- Track can easily be field-cut to custom lengths as required
- Two-circuit track with separate neutrals
 - 120 V, 20 A max load per circuit
- DMX/RDM bus supports:
 - Up to 32 DMX devices per data run
 - Up to 20 RDM devices per data run
- Suitable for angled or vertical mounting
- Coupler and feed connections are keyed to ensure that system components are fitted correctly
- Rugged, lightweight design can hold up to 35 lb/ft (52 kg/m) when supported on 18 in (0.46 m) centers
- Compatible with OneTrack Backbone (Surface only):
 - Increases allowable distance between structural attachment points without reducing load capacity
 - Provide power and data to non-track luminaires for high-bay exhibit spaces and other specialty applications
- Available stock in black and white
- Three-year warranty

REGULATORY AND COMPLIANCE

- UL and cUL Listed

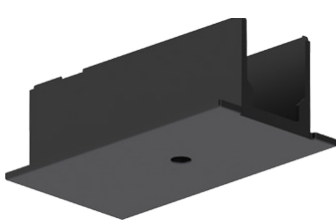


OneTrack Model and Part Numbers

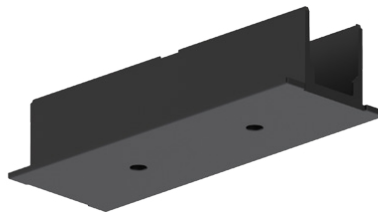
Description	P/N (Black)	P/N (White)	Model*	Surface	Recessed
<i>Surface/Suspension Track</i>					
Surface-mount track section with data bus, 4 ft (1.2 m)	7076A1001	7076A1001-1	OT04	Y	N
Surface-mount track section with data bus, 8 ft (2.4 m)	7076A1002	7076A1002-1	OT08	Y	N
Surface-mount track section with data bus, 12 ft (3.6 m)	7076A1003	7076A1003-1	OT12	Y	N
<i>Recessed Track</i>					
Recessed-mount track section with data bus, 4 ft (1.2 m)	7076A1301	7076A1301-1	OT04-REC	N	Y
Recessed-mount track section with data bus, 8 ft (2.4 m)	7076A1302	7076A1302-1	OT08-REC	N	Y
<i>Track Accessory</i>					
Track trimming tool (required if field cuts are made)	7076A1004		OT-TRIM	Y	Y
<i>OneTrack Feeds and Couplers</i>					
End feed, key right	7076A1110	7076A1110-1	OT-EF-KR	Y	Y
End feed, key left	7076A1111	7076A1111-1	OT-EF-KL	Y	Y
End feed cover for recessed-mount applications†	7076A1310	7076A1310-1	OT-EF-CVR-REC	N	Y
Straight coupler - includes 4 in (100 mm) pendant clip for joint support	7076A1013	7076A1013-1	OT-SC	Y	Y
I-coupler	7076A1114	7076A1114-1	OT-IC	Y	Y
I-coupler cover for recessed-mount applications	7076A1314	7076A1314-1	OT-IC-CVR-REC	N	Y
Flex coupler	7076A1115	7076A1115-1	OT-FLXC	Y	N
L-coupler, key inside	7076A1116	7076A1116-1	OT-LC-KI	Y	Y
L-coupler, key outside	7076A1117	7076A1117-1	OT-LC-KO	Y	Y
L-coupler cover for recessed-mount applications	7076A1316	7076A1316-1	OT-LC-CVR-REC	N	Y
T-coupler, key inside right	7076A1118	7076A1118-1	OT-TC-KIR	Y	Y
T-coupler, key inside left	7076A1119	7076A1119-1	OT-TC-KIL	Y	Y
T-coupler, key outside right	7076A1120	7076A1120-1	OT-TC-KOR	Y	Y
T-coupler, key outside left	7076A1121	7076A1121-1	OT-TC-KOL	Y	Y
T-coupler cover for recessed-mount applications	7076A1318	7076A1318-1	OT-TC-CVR-REC	N	Y
X-coupler	7076A1122	7076A1122-1	OT-XC	Y	Y
X-coupler cover for recessed-mount applications	7076A1322	7076A1322-1	OT-XC-CVR-REC	N	Y
End cap	7076A1023	7076A1023-1	OT-CAP	Y	Y
Universal adapter (provides mechanical-only connection to track)	7076A1155	7076A1155-1	OT-UA-120	Y	Y
DMX terminator	7076A1030	7076A1030-1	OT-DMXT	Y	Y

*Add -1 to model number for white. Example: 7076A1001 = OT04, 7076A1001-1 = OT04-1.

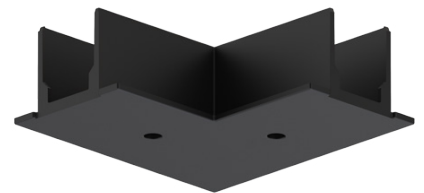
† For recessed-mount applications, both the end feed or coupler and the respective cover are required. Recessed-mount covers are compatible with all respective feeds or couplers, regardless of key orientation.



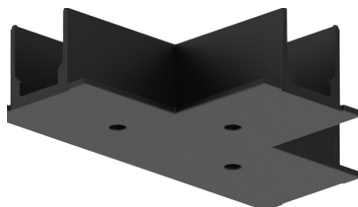
End Feed Cover



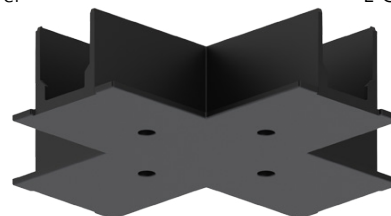
I-Coupler Cover



L-Coupler Cover



T-Coupler Cover



X-Coupler Cover

OneTrack Model and Part Numbers

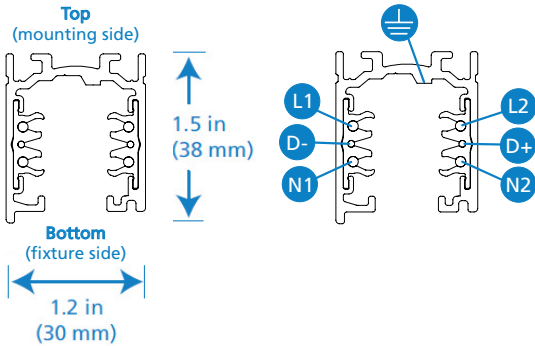
Description	P/N (Black)	P/N (White)	Model*	Surface	Recessed
<i>OneTrack Suspension Mount Accessories</i>					
T-bar mounting clip	7076A1027	7076A1027-1	OT-TBAR	Y	N
Square canopy cover	7076A1128	7076A1128-1	OT-CPYCVR	Y	N
2 in (50 mm) suspension clip - accepts 1/4-20 threaded material	7076A1040	7076A1040-1	OT-2IN-CLIP	Y	Y
4 in (100 mm) stabilizing clip	7076A1041	7076A1041-1	OT-4IN-CLIP	Y	Y
Wire rope suspension kit (no canopy) - for use with 7076A1041(-1) and 7076A1040(-1), includes 4 ft (1.2 m) of 1/16 in (1.5 mm ²) wire rope	7076A1050		OT-CLIP-WR	Y	Y
5 in (125 mm) round canopy kit for wire feed - includes 4 ft (1.2 m) of 1/16 in (1.5 mm ²) wire rope	7076A1142	7076A1142-1	OT-5IN-FD-WR	Y	N
5 in round canopy kit - includes 4 ft (1.2 m) of 1/16 in (1.5 mm ²) wire rope	7076A1143	7076A1143-1	OT-5IN-WR	Y	N
Threaded stem pendant support kit - includes 2 ft (0.6 m) M6 pendant	7076A1045	7076A1045-1	OT-PEND	Y	N
<i>OneTrack Current Limiters†‡</i>					
Current limiter, end feed, key right	7076A1080	7076A1080-1	OT-CLEF-KR	Y	N
Current limiter, end feed, key left	7076A1081	7076A1081-1	OT-CLEF-KL	Y	N
Current limiter, I-coupler	7076A1082	7076A1082-1	OT-CLIC	Y	N
Current-limiting circuit breaker, single-pole, 3 A	7076A1083	7076A1083-1	OT-BKR-1P3A	Y	N
Current-limiting circuit breaker, single-pole, 5 A	7076A1084	7076A1084-1	OT-BKR-1P5A	Y	N
Current-limiting circuit breaker, single-pole, 8 A	7076A1085	7076A1085-1	OT-BKR-1P8A	Y	N
Current-limiting circuit breaker, single-pole, 12 A	7076A1086	7076A1086-1	OT-BKR-1P12A	Y	N

*Add -1 to model number for white. Example: 7076A1027 = OT-TBAR, 7076A1027-1 = OT-TBAR-1.

† The above current limiters are Title 24 compliant.

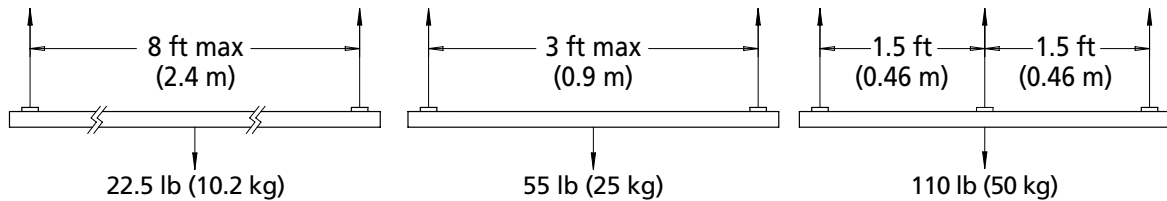
‡Current-limiting breakers support inrush current 12 times their rated capacity.

TRACK DETAILS

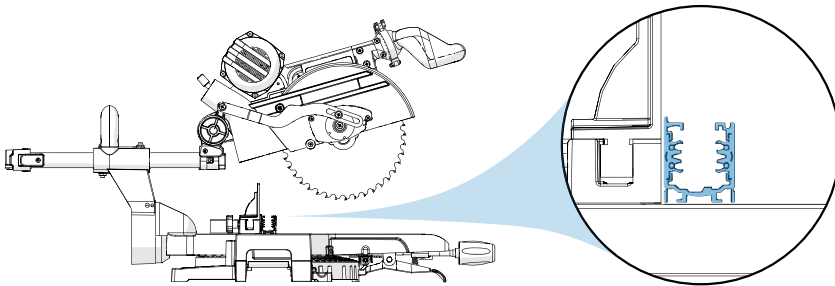


- Two 120 V circuits with separate neutrals; max load of 20 A per circuit
- Two-wire low voltage bus for DMX/RDM signal transmission
 - Low voltage bus can support DALI or 0–10 V signals instead, if required
- Surface mounting options:
 - Ceiling mount, including gabled ceilings
 - Wall mount, including vertical or angled configurations
- Suspension mounting options:
 - Wire rope
 - Pendant stem
 - Threaded rod
 - Drop ceiling T-bar
- Contact ETC for information on additional OneTrack options.

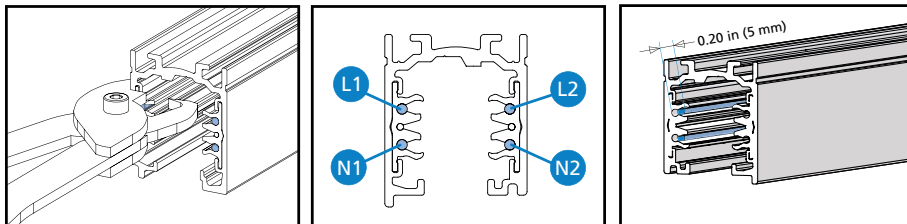
LOAD CAPACITY



FIELD CUTS



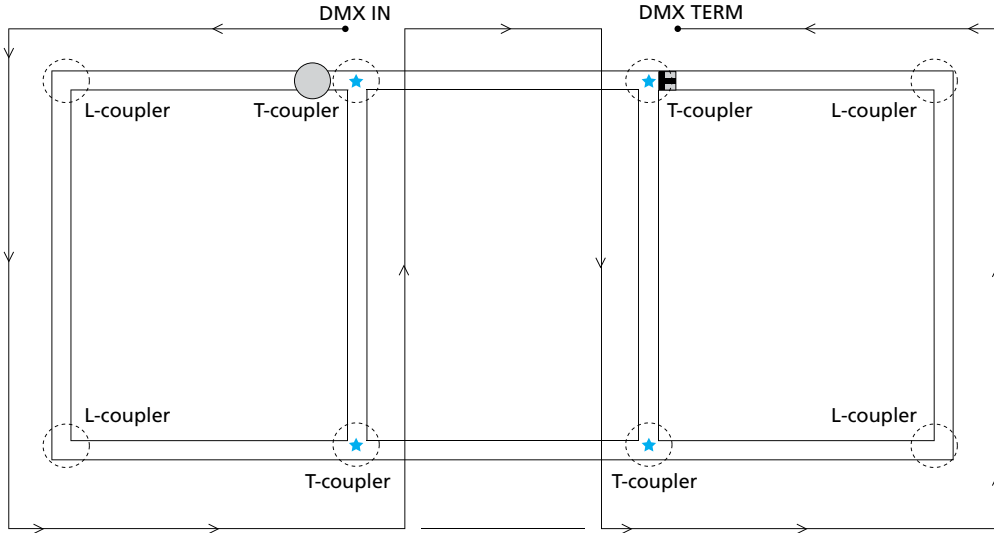
- Track ships in standard section lengths
- Track can be cut to custom lengths on site
- ETC recommends using a power miter saw to ensure that cuts are straight and square
- Make cuts with the open side of the track facing the saw blade
- Use a file to remove burrs, and clean any metal shavings before installation
- For best performance, use cut sections at the end of a run, with no feeds or couplers attached



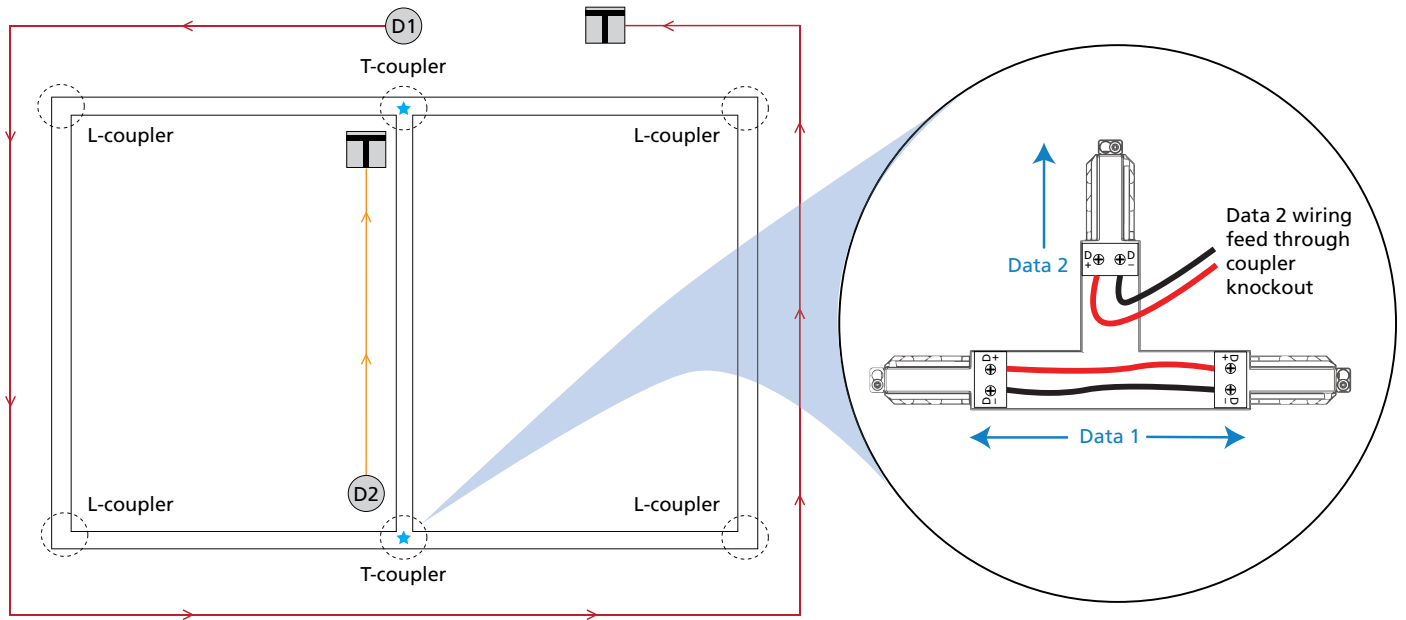
- After cutting track, use the track trimming tool (7076A1004) to trim the four power conductors 0.2 in (5 mm) from the track end
- Check that cut copper is clear of the track before installing

DMX DATA

Plan your DMX data paths before installation. DMX data paths must be contiguous daisy chains with terminations. T-junctions, Y-taps, and loops are not permitted and will result in faulty performance of DMX fixtures. Some track configurations will require multiple DMX runs to supply DMX data properly.



In the above example, some of the data-line connections in the OneTrack T-couplers must be disconnected in the field prior to installation to avoid loops. Coupler wiring can also be modified to support multiple DMX runs in a single coupler.



ETC does not support the termination of Class 1 power wiring and Class 2 data wiring in the same coupler or feed. Systems with low voltage circuits installed as Class 2 may require additional end feeds or other components to accommodate this requirement.

For detailed information on installation and layout of OneTrack systems, including track and accessory dimensions, data bus routing for complex configurations, basic troubleshooting and more, please refer to the *OneTrack System Planning and Installation Guide* available to download at: etconnect.com/OneTrack.



Corporate Headquarters • Middleton, WI USA
 Global Offices • London, UK • Rome, IT • Holzkirchen, DE • Paris, FR • Hong Kong
 Dubai, UAE • Singapore • New York, NY • Orlando, FL • Los Angeles, CA • Austin, TX
 ©2025 ETC. All Rights Reserved. All product information and specifications subject to change. Rev E 2025-03
 *Trademark and patent info: etconnect.com/IP • Third-party license agreement info: etconnect.com/licenses